

HOME CENTER

HOME AUTOMATION SERVER



www.homecenter.be/start

HIS v2

short installation manual

Content

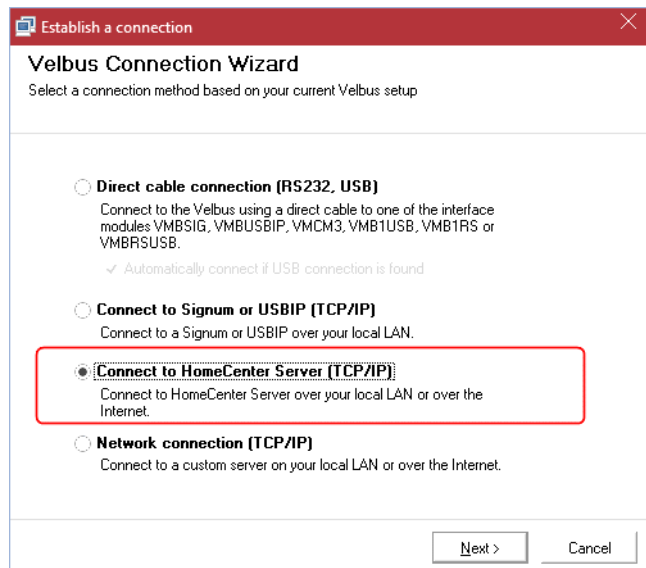
The HIS v2 server module and a short manual. The Home center software (including a license with a value of 350 EUR incl. VAT) is already pre-installed on the module.

Requirements

1. A Velbus home automation system: make sure that as many modules as possible are already installed and connected.
2. Access to your home network (LAN – Local Area Network) via a network cable.
3. To use the iPhone/iPad app, a WiFi connection or mobile network is required. Please note that certain firewall or router settings may block the auto-detection of HIS v2 for the Home center clients. You may need to adjust the settings or add an exception to the firewall so that the Home center client can communicate with the HIS v2.

Connection

The HIS v2 is a server module that is connected to your Velbus installation as well as to your network. Connect the HIS v2 to your home network via a network cable with a standard network connection (RJ45). **Important: always connect the bus (power supply) last.**



First installation

For initial installation, the HIS v2 must be located on a network with an Internet connection. The server will automatically activate its license via the internet. The day you do this, is the starting date for 1 year of free updates (included). If this is the first time that a Velbus installation is connected, the server will immediately read all modules and automatically sort them into groups (Zones). As soon as the activation and first scan are complete, the HIS v2 is ready for use.

If the configuration of the installation has not yet been done (via Velbuslink), it is best to complete the configuration first. The Home center software does not see these changes automatically! Home center needs to re-analyze the configuration. Do this via a 'Full reset'. Log in to Home center via the web page (see further in this document), then via *Settings - Backup / restore / reset*.

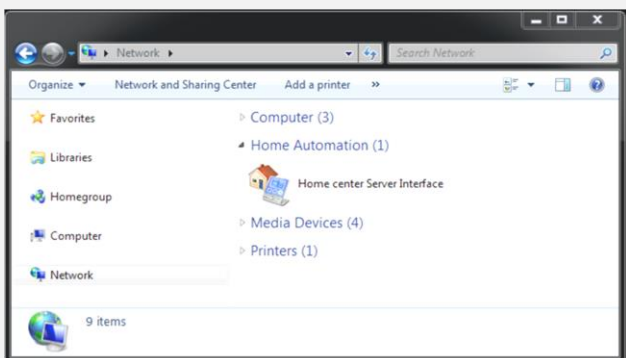
If a working configuration is already present, the module will analyze this configuration at the first startup, so you can immediately view and operate the installation.

Open start page of HIS in a web browser

For some downloads and changes to your HIS v2, you need to go to the webpage. This can be done in several ways:

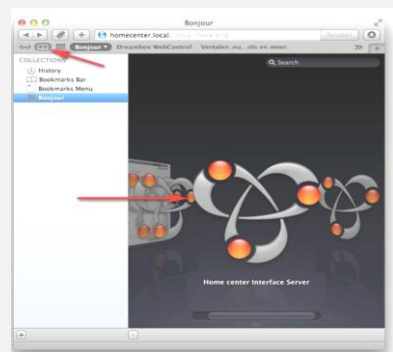
1. Windows 7, 8 or 10 in a common home network

Select *Network* from the *Windows Explorer*. Double-click the *Home center Server Interface* icon to open the web page (UPNP detection).

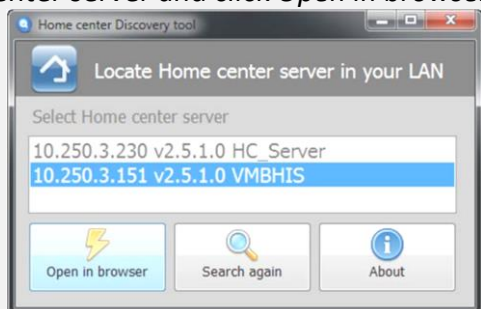


2. Mac OS X in a common home network

Open Safari, click on *bookmarks* (the open book icon). On the left, select *Bonjour*. Navigate through the items until you see your *Home center Interface server*. Double click on it.



3. Via the **Discovery tool** which can be found on <http://download.homecenter.be> (UPNP detection and own broadcast detection). When you start the program, you will immediately see the available Home center server(s) (if the firewall on your PC or the router settings detects the Do not block the module in the network). Select the Home center server and click *Open in browser*.



4. You can also enter the IP address of your HIS v2 directly into the **browser's address bar**. You can use this IP address retrieval via the iPhone/iPad app via the WIFI connected to the network in which the Home center module is located: the IP address appears automatically in the application. Or via the Home center client on Windows, this can be seen on the login screen.

Login

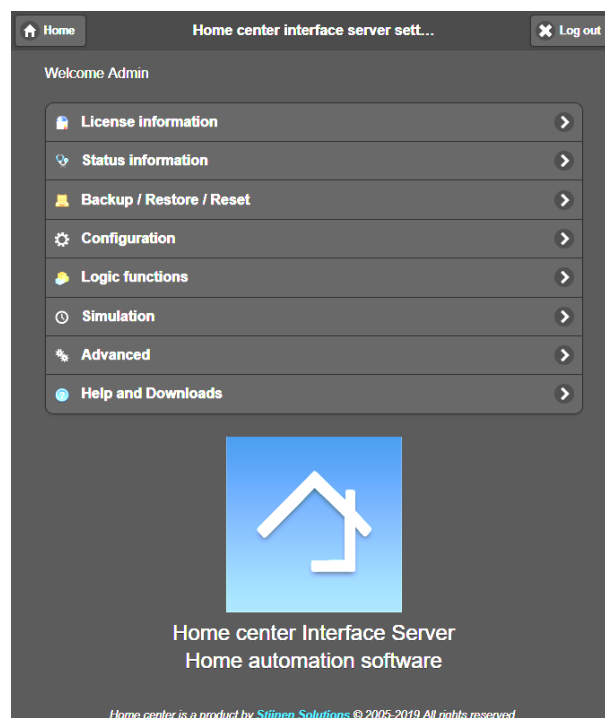
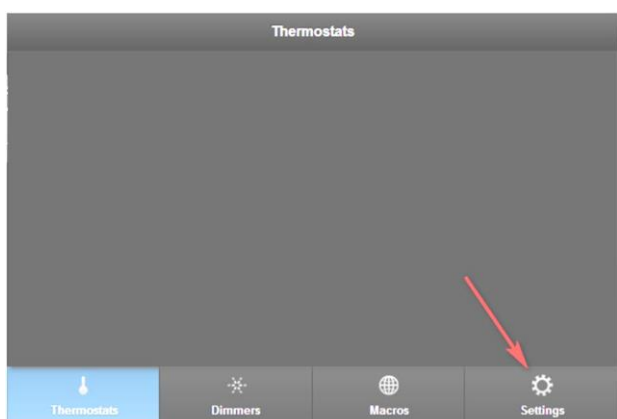
When you open the HIS v2 web page, you will be prompted to enter a user name and password. By default it is set to user **admin** and password **admin**.

If the Velbus installation is already fully configured, you can basically start operating immediately, using devices connected to your network: iPhone, iPod touch, iPad or Windows PC, Android tablet or smartphone. Otherwise, you need to perform a 'Full reset' via the *Settings / Backup - restore - reset* page in the browser before the analysis of your configuration can be done and you can operate the installation.

The Home center app for iOS devices can be obtained free of charge from the App Store. Operation on Android devices is via the web page. The Windows client software can be downloaded from your own server HIS v2. This is located on the *Settings / Help and downloads* page that you can open from your web browser.

Open Settings page of HIS v2

After opening the web page, you can log in and go to the Settings page by clicking *Settings* at the bottom right. Possibly there is a button *More*, then click on it first. A list of settings will appear.



From the *Settings*-page you can, among other things, do the following:

- Download all manuals (via *Help and downloads*)
- Restart the Home center software (internally on the HIS v2 module) (via *Advanced*)
- Reboot the entire device (via *Advanced*)
- Manage users: set who can control or view what via user rights. More information about this is available in the Home center user guide. This is available via *Help and downloads*
- Download software updates (via *Advanced*)

Further configuration of Home center

Other Home center settings such as creating zones, adding maps or photos, buttons... is done via the Home center **Windows client**, via the *Settings*.

Please refer to the extended manuals for Home center.

Backup

Regularly take a **backup** of the configuration so that you can always restore it if you accidentally delete something. (Via *Settings / Backup – Restore – Reset*)

Activation of Cloud

Is only possible when the password has been changed for the 2 default users!

Activation of Logging for monitoring and Simulation

Is only possible when a mini SD card is inserted. It can be inserted next to the network cable, under the plastic plate. All details can be found in the accompanying manual.

Hardware

Dimensions

- 4 modules wide: 71 mm (width) x 90 mm (height) x 57 mm (depth)

I/O connections

- Gigabit Ethernet interface (LAN)
- USB 2.0 interface (Front: Velbuslink direct connection, Top: Future use)
- Bus connection
- mini SD card connection (for Logging and Simulation)

Consumption

- 5 W in operation mode for Home center

Operation and feedback

- Feedback LEDs (Power supply, Module active, Home center active and Bus activity)
- Reset possibility

More information

The most recent information can be found at <http://www.homecenter.be>

All manuals are available through the web browser -> *Settings / Help and downloads*

Velbus: <http://www.velbus.eu>